

Out-of-the-box automated solution to run the entire network based purely on open networking technologies



Telecommunications network efficiency and ease of use is becoming an important component for business success. These days hyper-scale operators (biggest players with thousands and ten thousands routers) invest in self-developed solutions by leveraging on combination of open equipment and open software. Such leverage requires huge efforts and may sound infeasible and focus-losing for majority of medium to large companies.

XCloud Networks provides a single intuitive GUI to manage on-premise networks of any size effortlessly with efficiency and technology leverage previously available to hyper-scale operators only.

Reducing CapEx/OpEx up to 10X. Saving time up to 100X.

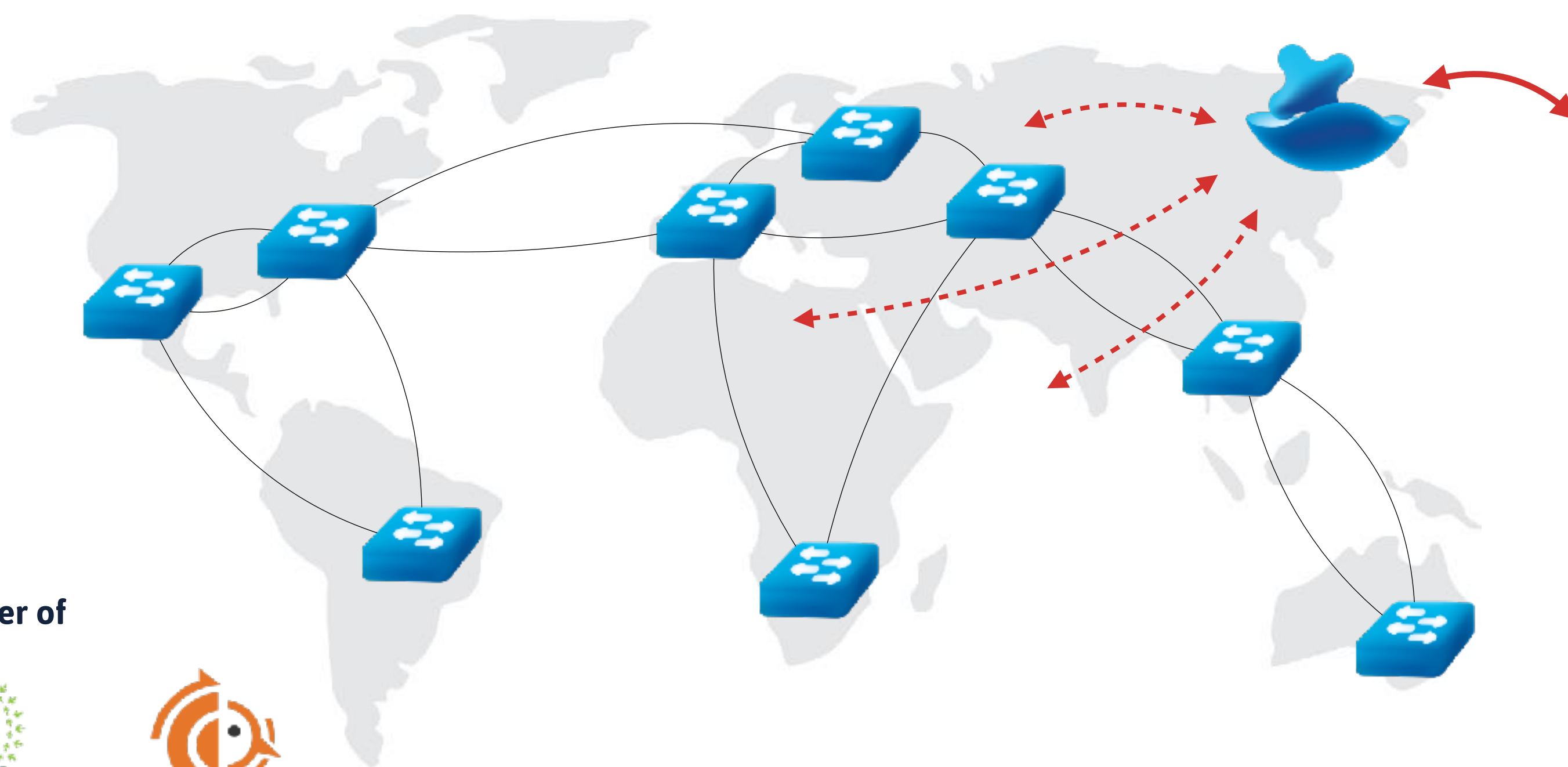
Our 24/7/365 TAC is available by phone/e-mail/messenger/ticketing and all inquiries are directly addressed to experienced specialists acting as a single point of contact for the whole system.

- Full solution
- Intuitive GUI
- Integrated billing
- Service model
- 1/10/25/40/50/100 Gbps
- Monitoring
- Statistics
- Logging
- Ready to go
- Low cost
- Hyper-scale
- On-premise
- Easy migration
- No-impact maintenance
- Zero touch provisioning
- L2/L3 services
- Resource slicing
- Approval procedures
- Outstanding support
- Customizable
- API
- Saves TCO up to 10X
- Saves Time up to 100X
- No vendor lock-in



We guide our customers through the whole open networking transformation journey.

1. Demo
2. POC & Planning
3. First rack deployment
4. Upgrades and migrations



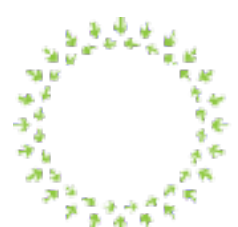
* Alias

 * Billing Cycle
 Hourly
 Ports

Switch Port	Vlan	Bandwidth (Mbps)	Price (Monthly)
4x0/1/2/3/4/5/6/7/8/9/10/11/12/13/14/15/16/17/18/19/20/21/22/23/24/25/26/27/28/29/30/31/32/33/34/35/36/37/38/39/40/41/42/43/44/45/46/47/48/49/50/51/52/53/54/55/56/57/58/59/60/61/62/63/64/65/66/67/68/69/70/71/72/73/74/75/76/77/78/79/80/81/82/83/84/85/86/87/88/89/90/91/92/93/94/95/96/97/98/99/100	210	100	18000 USD (18000 USD)
4x0/1/2/3/4/5/6/7/8/9/10/11/12/13/14/15/16/17/18/19/20/21/22/23/24/25/26/27/28/29/30/31/32/33/34/35/36/37/38/39/40/41/42/43/44/45/46/47/48/49/50/51/52/53/54/55/56/57/58/59/60/61/62/63/64/65/66/67/68/69/70/71/72/73/74/75/76/77/78/79/80/81/82/83/84/85/86/87/88/89/90/91/92/93/94/95/96/97/98/99/100	220	100	18000 USD (18000 USD)
Total: 20000 USD (20000 USD)			<input type="button" value="Add"/>



Member of



OPEN
COMMUNITY



FRRouting

ELASTIC BROADBAND

* Alias
San Jose to Sidney

* Billing Cycle
Hourly

Ports
+ Port + Provider

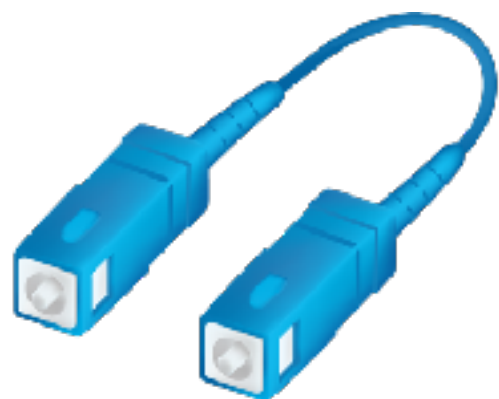
Next

Switch Port	Vlan	Bandwidth (Mbit/s)	Price(Monthly)
sw01-nyc-exp2@exp2@ev01-tyc	210	100	16,000 USD (16,000 USD)
sw01-nyc-exp3@exp3@ev01-tyc	210	100	15,000 USD (15,000 USD)
Total: 25,000 USD (25,000 USD)			Provider

Our ready-to-go elastic broadband functionality allows network operators to partition their transport network and securely provide on-demand wholesale services to their consumers (external or internal users)

Platform comes with integrated billing system which is able to calculate price based on regions, links, transit locations, bandwidth, number of ports, incorporates different 95-th percentile and discount options, works in pre-paid and post-paid mode, shows prices in local currency. Additional custom functionality can be developed by request.

ELASTIC CROSS-CONNECT



Elastic cross-connect is automated approach for meet-me-room in carrier hotels or optical cross rack telecom facility or optical patch panel in one of remote shelters of optical backbone.

Solution is made by integration with 3D MEMS photonic switch. Single switch can cross-connect 160 or 320 ports of dark fiber pairs in a non-blocking design.

Whole lifecycle is managed through XCloud Networks GUI.

Besides pushing cross-connect configuration towards photonic switch our platform actively collects telemetry information regarding light level from every single port, telemetry information is analyzed by our analytics engine and tailored alarms are sent to relevant users to accelerate preventive actions as well as to help in troubleshooting process.

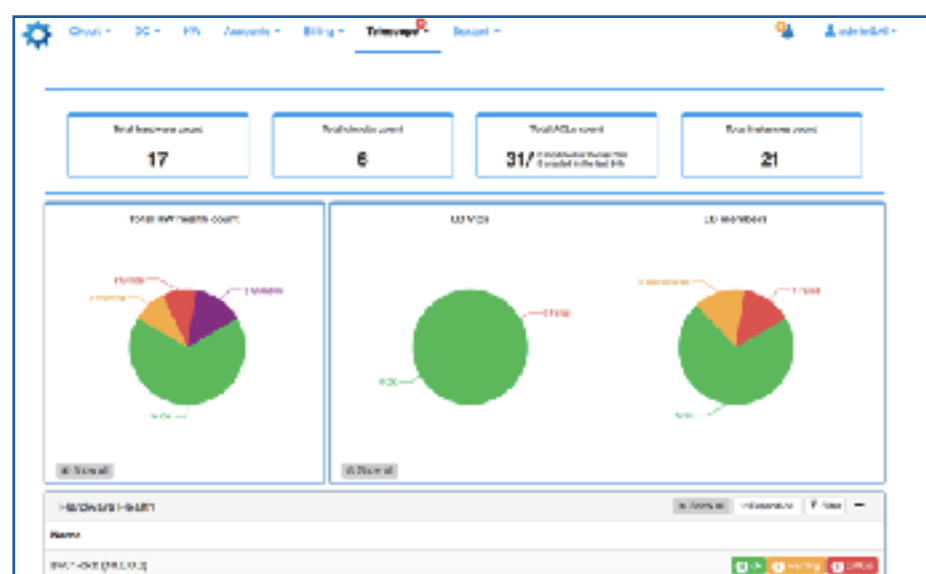
NETWORK VISIBILITY



Platform provides easy to access and easy to setup visibility. Traffic statistics are available for every defined service plus platform visualizes relevant port status, service status or mac activity in eye-catching way.

Custom statistic boards can be created in a few clicks for grouping/summing for easy overview. These tools are designed to be used by network engineers, by managers and by internal/external customers.

MONITORING & MAINTENANCE



Our integrated fault prediction and detection system constantly follows telemetry information from every hardware unit.

In case maintenance has to be done, device can be safely powered off after enabling maintenance mode which tells every neighboring device to re-route the traffic.

In the event of switch replacement it should not necessarily be replaced by the same model or even same vendor, just any of validated switches with amount and types of ports you need, then network operating system can be installed automatically and configuration of previously removed switch can be automatically restored.

NETWORK TOPOLOGY



L3 fabric design allows to build transmission networks of every topology. BGP protocol which is used to propagate information about network is the most scalable, allows full equal cost link usage and eliminates usage of old protocols and methods like spanning tree or LAG(link aggregation).

Customer services such as IP-Transit, L2 VPN, Audio/Video streaming, VoIP and others are being transported on top of L3 fabric.

This design allows any combination of certified and supported hardware. Even high availability can be organized by using different models or even different vendors.

DATA CENTER INTEGRATION



Our lifecycle management platform is also available for data center networking which basically means that in addition to described functionality all the data center needs such as physical/virtual server connection, server load balancing, security access control, virtual private network and encryption are available under single platform.